

LOAD CHART AT-14 (9 TONNE REAR AXLE)

LOAD CHART C1234- MODEL AT-14 (9 tonne REAR AXLE)

HOIST ROPE
DIAMETER: NOMINAL 13mm.
CONST.: 35Wx7NR COMPACT MIN. BREAKING LOAD: 134 KN.
MACHINE SPURGE & THIMBLE EYE, ONE END ONLY, LENGTH: 60m.



S.W.L. ARE BASED ON 88.7% STABILITY & STRENGTH.
- S.W.L. ABOVE BOLD RED LINE ARE STRUCTURAL.
S.W.L. ARE BASED ON FIRM LEVEL GROUND WITH TYRES INFLATED AS PER CHART.
WEIGHT OF HOOKS, BLOCKS, SLINGS & OTHER LOAD HANDLING DEVICES SHALL BE ADDED TO THE WEIGHT OF THE LOAD.
LIFT & CARRY - THE S.W.L. SHALL BE CARRIED WITH THE MINIMUM BOOM LENGTH & AS CLOSE TO THE GROUND AS POSSIBLE AT SPEEDS NOT IN EXCESS OF 0.4 m/sec.



BOOM HEAD MOUNTED RHINO HOOK

WHEN USING THE RHINO HOOK, ENSURE THE WINCH ROPE IS FULLY TENSIONED.
MAXIMUM S.W.L. ABOVE BOLD BLACK LINE IS 8000 KG WHICH IS STRUCTURAL.
S.W.L. BELOW BOLD BLACK LINE AS PER CHART WITH LENGTH AS READ ON BOOM LENGTH INDICATOR + 0.5 METRE.



S.W.L. IN KILOGRAMS FOR SLEW ANGLES OF 10° OR LESS EITHER SIDE OF STRAIGHT AHEAD (INDICATED BY GREEN LED ON DASH).

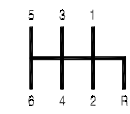
S.W.L. IN KILOGRAMS FOR SLEW ANGLES OF GREATER THAN 10° EITHER SIDE OF STRAIGHT AHEAD (INDICATED BY YELLOW LED ON DASH).

RADIUS IN METRES

TYRES

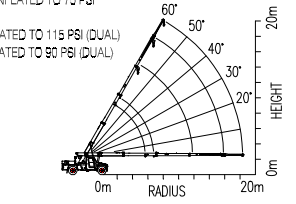
- FRONT: 11.00 x 20 x 18 PLY INFLATED TO 115 PSI (DUAL)
REAR: 11.00 x 20 x 18 PLY INFLATED TO 80 PSI (DUAL)
or
- FRONT: 16.5 R 22.5 SUPER SINGLE INFLATED TO 115 PSI
REAR: 16.5 R 22.5 SUPER SINGLE INFLATED TO 85 PSI
or
- FRONT: 24 R 21 SUPER SINGLE INFLATED TO 105 PSI
REAR: 24 R 21 SUPER SINGLE INFLATED TO 75 PSI
or
- FRONT: 12.00 x 20 x 16 PLY INFLATED TO 115 PSI (DUAL)
REAR: 12.00 x 20 x 16 PLY INFLATED TO 80 PSI (DUAL)

GEAR CHANGE



WARNING

DO NOT LEAVE KEY "ON" & PARK BRAKE "OFF" ELSE EMERGENCY STEERING WILL ACTIVATE.



WINCH SAFE WORKING LOADS

SINGLE PART	3400 KG
TWO PARTS	6800 KG
THREE PARTS	10200 KG

BOOM ANGLE	BOOM PIVOT TO HEAD SHEAVES - MANUAL EXTENSION RETRACTED																				MAN EXT	FLY JIB
	5.65	6.00	6.50	7.00	7.50	8.00	8.50	9.00	9.50	10.00	10.50	11.00	11.50	12.00	12.50	13.00	13.50	13.85	17.90	20.50		
60			10200	10200	10200	10200	10200	10200	9200	8300	7550	6400	5850	5350	4950	4600	4300	4100	1850	750		
			1.02	1.27	1.52	1.77	2.02	2.27	2.52	2.77	3.02	3.27	3.52	3.77	4.02	4.27	4.52	4.69	6.72	8.03		
50	10200	10200	10200	10200	8900	7850	7000	6300	5700	5200	4800	4400	4100	3800	3550	3300	3100	3000	1600	700		
	1.42	1.64	1.97	2.29	2.61	2.93	3.25	3.57	3.89	4.22	4.54	4.86	5.18	5.50	5.82	6.14	6.47	6.69	9.29	10.97		
40	10200	9700	8300	7200	6350	5650	5050	4600	4200	3850	3550	3250	3050	2850	2650	2450	2300	2200	1300	650		
	2.14	2.41	2.79	3.18	3.56	3.94	4.33	4.71	5.09	5.47	5.86	6.24	6.62	7.01	7.39	7.77	8.16	8.42	11.53	13.53		
30	8500	7550	6500	5700	5050	4550	4100	3700	3400	3100	2850	2650	2450	2300	2150	2000	1850	1800	1150	600		
	2.74	3.04	3.47	3.91	4.34	4.77	5.21	5.64	6.07	6.51	6.94	7.37	7.80	8.24	8.67	9.10	9.54	9.84	13.35	15.60		
20	7200	6450	5600	4900	4350	3900	3550	3200	2950	2700	2500	2300	2150	2000	1850	1750	1600	1550	1100	550		
	3.19	3.52	3.99	4.46	4.93	5.40	5.87	6.34	6.81	7.28	7.75	8.22	8.69	9.16	9.63	10.10	10.56	10.89	14.70	17.15		
10	6500	5850	5100	4500	4000	3600	3250	2950	2700	2500	2300	2100	1950	1800	1700	1600	1500	1400	1000	500		
	3.48	3.82	4.32	4.81	5.30	5.79	6.29	6.78	7.27	7.76	8.26	8.75	9.24	9.73	10.23	10.72	11.21	11.56	15.54	18.11		
0	6250	5650	4900	4350	3850	3450	3150	2850	2600	2400	2200	2050	1900	1750	1650	1550	1450	1350	950	500		
	3.60	3.95	4.45	4.95	5.45	5.95	6.45	6.95	7.45	7.95	8.45	8.95	9.45	9.95	10.45	10.95	11.45	11.80	15.85	18.45		

BOOM ANGLE	BOOM PIVOT TO INNER LUG, 1st EXTENSION - MANUAL EXTENSION RETRACTED																					
	3.65	4.00	4.50	5.00	5.50	6.00	6.50	7.00	7.75	12.200	11.150	9800										
60														1.20	1.45	1.83						
														14000	14000	12050	10000	8450	6800			
50														14000	13350	10700	8850	7500	6000			
														1.17	1.49	1.81	2.13	2.45	2.93			
40														14000	14000	11950	9400	7650	6350	5400	4650	3800
														1.02	1.40	1.78	2.17	2.55	2.93	3.32	3.89	
30														14000	14000	10650	8350	6750	5600	4750	4050	3300
														1.11	1.42	1.85	2.28	2.72	3.15	3.58	4.02	4.66
20														14000	13100	9950	7900	6500	5450	4600	4000	3250
														1.38	1.71	2.18	2.65	3.12	3.59	4.06	4.53	5.24
10														14000	11700	8950	7150	5900	4950	4200	3650	2950
														1.55	1.89	2.38	2.88	3.37	3.86	4.35	4.85	5.59
0														12600	10050	7700	6150	5000	4200	3550	3050	2450
														1.60	1.95	2.45	2.95	3.45	3.95	4.45	4.95	5.70

BOOM ANGLE	BOOM PIVOT TO OUTER LUG, 1st EXTENSION - MANUAL EXTENSION RETRACTED																									
	4.70	5.00	5.50	6.00	6.50	7.00	7.50	8.00	8.50	8.80	12700	11600	10650	9800	9050	8650										
60																	1.20	1.45	1.70	1.95	2.20	2.35				
																	14000	14000	11350	9400	8000	6850	6000	5300	4900	
50																	1.17	1.49	1.81	2.13	2.45	2.77	3.10	3.42	3.61	
																	14000	13100	10500	8700	7350	6350	5500	4850	4300	4000
40																	1.55	1.78	2.17	2.55	2.93	3.32	3.70	4.08	4.46	4.69
																	11500	10050	8200	6850	5850	5050	4400	3850	3400	3200
30																	2.02	2.28	2.72	3.15	3.58	4.02	4.45	4.88	5.31	5.57
																	10350	9000	7300	6100	5150	4450	3850	3400	2950	2750
20																	2.37	2.65	3.12	3.59	4.06	4.53	5.00	5.47	5.94	6.22
																	9700	8500	7000	5850	5000	4300	3750	3300	2950	2750
10																	2.58	2.88	3.37	3.86	4.35	4.85	5.34	5.83	6.32	6.62
																	8800	7750	6400	5350	4600	3950	3450	3050	2650	2500
0																	2.58	2.88	3.37	3.86	4.35	4.85	5.34	5.83	6.32	6.62
																	8500	7500	6150	5200	4450	3850	3350	2950	2600	2400
																	2.65	2.95	3.45	3.95	4.45	4.95	5.45	5.95	6.45	6.75